

FIGURE 1

DON

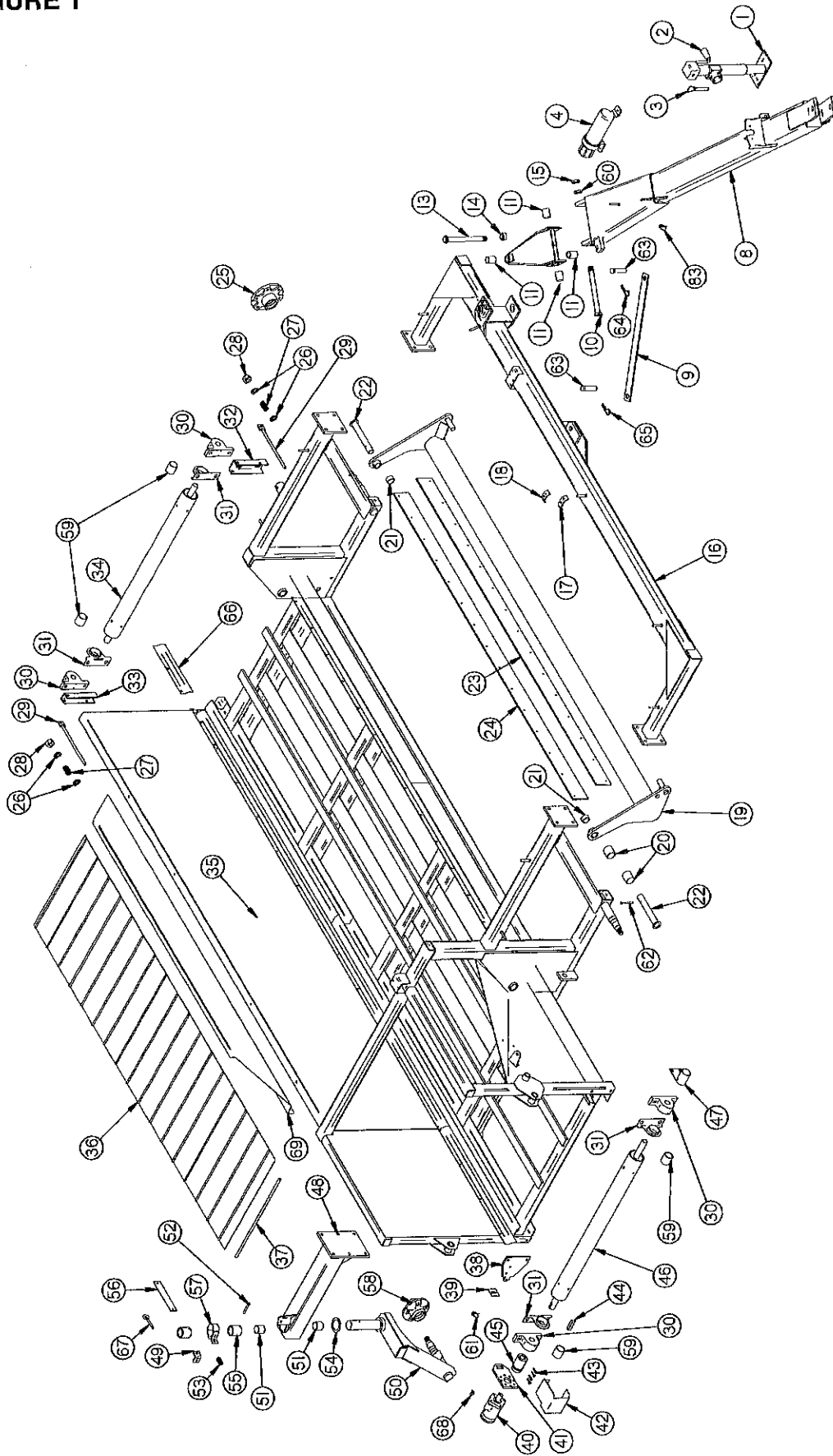
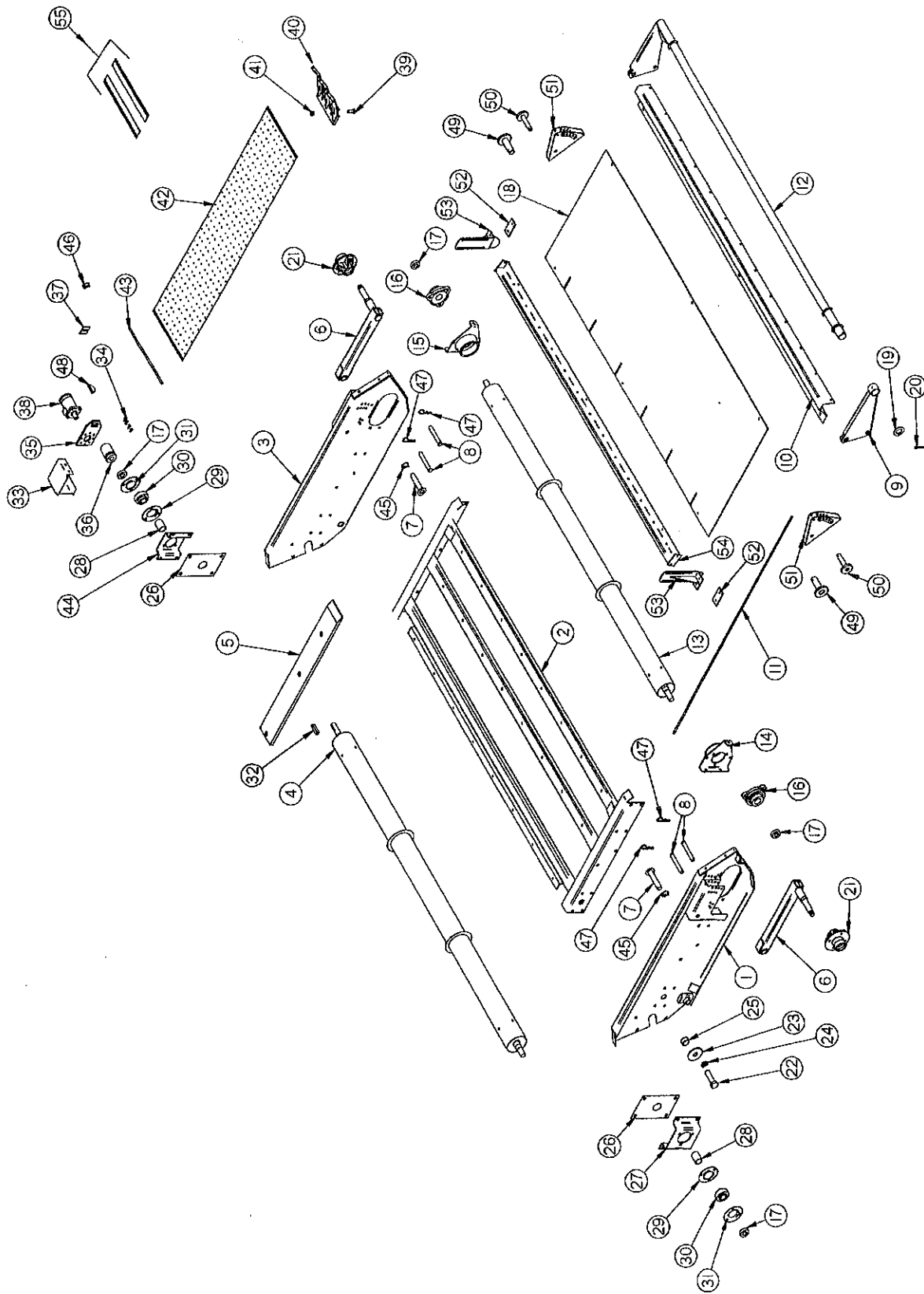


FIGURE 1
9' & 12' MERGER MAIN FRAME/POLE

ITEM	PART NO.		DESCRIPTION			
	9' HEAD	12' HEAD				
1.	BFR223	"	Jack	37.	SWM37	" Lacing Pin
2.	B17B	"	Jack Handle	38.	DWM51	" Male Torque Arm
3.	BFR4	"	Jack Pin & Chain	39.	DWM45	" Motor Spacer
4.	S522	"	Manual Holder	40.	DF1	" Hydraulic Motor
8.	WM227	"	Pole	*	WM225	" Seal Kit
9.	WM129	"	Transport Lock	41.	DWM39	" Torque Arm
10.	WM202	"	Pole Pin	42.	DWM41	" Motor Shield
11.	RG11	"	Bushing 1"ID x 1-1/4"OD x 2"	43.	DWM137	" Cap Screw - Coupler
12.	WM228	"	Steering Pivot	44.	G23	" Key 5/16" x 1-3/8" Sq.
13.	WM231	"	Queen Pin	45.	DWM27	" Coupler
14.	RG17	"	Nut-Slotted 1"-14 Full Thread	46.	SWM11	" Drive Roller
15.	RG14	"	Jam Nut 1"-14 Full Thread	47.	DWM31	" Shaft Shield
16.	WM226	WM305	Tongue Cross	48.	SWM3	" Caster Mount
17.	HE42	"	Hose Bracket	49.	WM211	" Break Angle
18.	23N67	"	Hose Bracket Front	50.	SWM2	" Caster
19.	WM230	WM306	Pickup Lifter	51.	BFR527	" Bushing 2"ID x 2-1/4"OD x 2"
20.	RG132	"	Bushing 1-1/4"ID x 2"	52.	BFR313	" Roll Pin 5/16" x 2-3/4"
21.	SWM30	"	Spacer	53.	WM210	" Spring - Red
22.	SWM13	"	Pin	54.	RG24	" Bronze Washer 2"ID x 3"OD x 1/8"
23.	WM235	WM304	Skirt Belt	55.	DWM59	" Brake Bushing
24.	WM236	WM302	Skirt	56.	WM288	" Brake Pad
25.	RG101	"	Hub - 6 bolt	57.	WM286	" Brake Band
*	RG98	"	Seal	58.	BFR60	" Hub
*	RG99	"	Inner Bearing	*	BFR57	" Seal
*	RG100	"	Inner Race	*	BFR58	" Inner Bearing
*	RG102	"	Stud Bolt	*	BFR59	" Inner Race
*	BFR144	"	Stud Nut	*	BFR143	" Stud Bolt
*	RG47	"	Outer Race	*	BFR144	" Stud Nut
*	RG48	"	Outer Bearing	*	BFR61	" Outer Race
*	RG182	"	Washer	*	BFR62	" Outer Bearing
*	RG105	"	Hub Nut	*	BFR63	" Washer
*	RG103	"	Hub Cap	*	BFR64	" Nut
*	T56	"	5/32" x 2" Cotter Pin	*	BFR66	" Hub Cap
*	RG128	"	Tire 9.5 L x 15	*	BFR65	" Cotter Pin
*	12N24	"	Wheel 15 x 8	*	BFR128	" Tire 6.70 x 15 SL
26.	K68	"	Washer 1/2"	*	BFR67	" Wheel 15 x 5
27.	DWM125	"	Spring - Blue	59.	SWM30	" Spacer
28.	R29	"	Nut 1/2"	60.	RG13	" 1" Star Washer
29.	DWM25	"	Tightener	61.	F56	" Lynch Pin
30.	DWM132	"	Pillow Block Bearing	62.	WM269	" Bolt 1/4" x 3" GR.5
31.	DWM36	"	Anti-Wrap Guard	63.	WM270	" Clevis Pin
32.	SWM34	"	Tightener Arm	64.	R70	" Cotter Pin
33.	SWM33	"	Back Tightener Arm	65.	BFR7	" Hair Pin
34.	SWM10	"	Conveyor Roller	66.	SWM59	" Left Rear Guard Extension
35.	WM229	WM308	Main Frame	67.	WM287	" I-Bolt
36.	WM237	WM301	Cross Conveyor Belt	68.	5B10	" Key 1/4" x 1" Woodruff
*	SWM38	"	Cross Conveyor Lacing	69.	WM300	" Hay Deflector

NOTE: *Means Not Shown
" Means Same As Previous

FIGURE 2

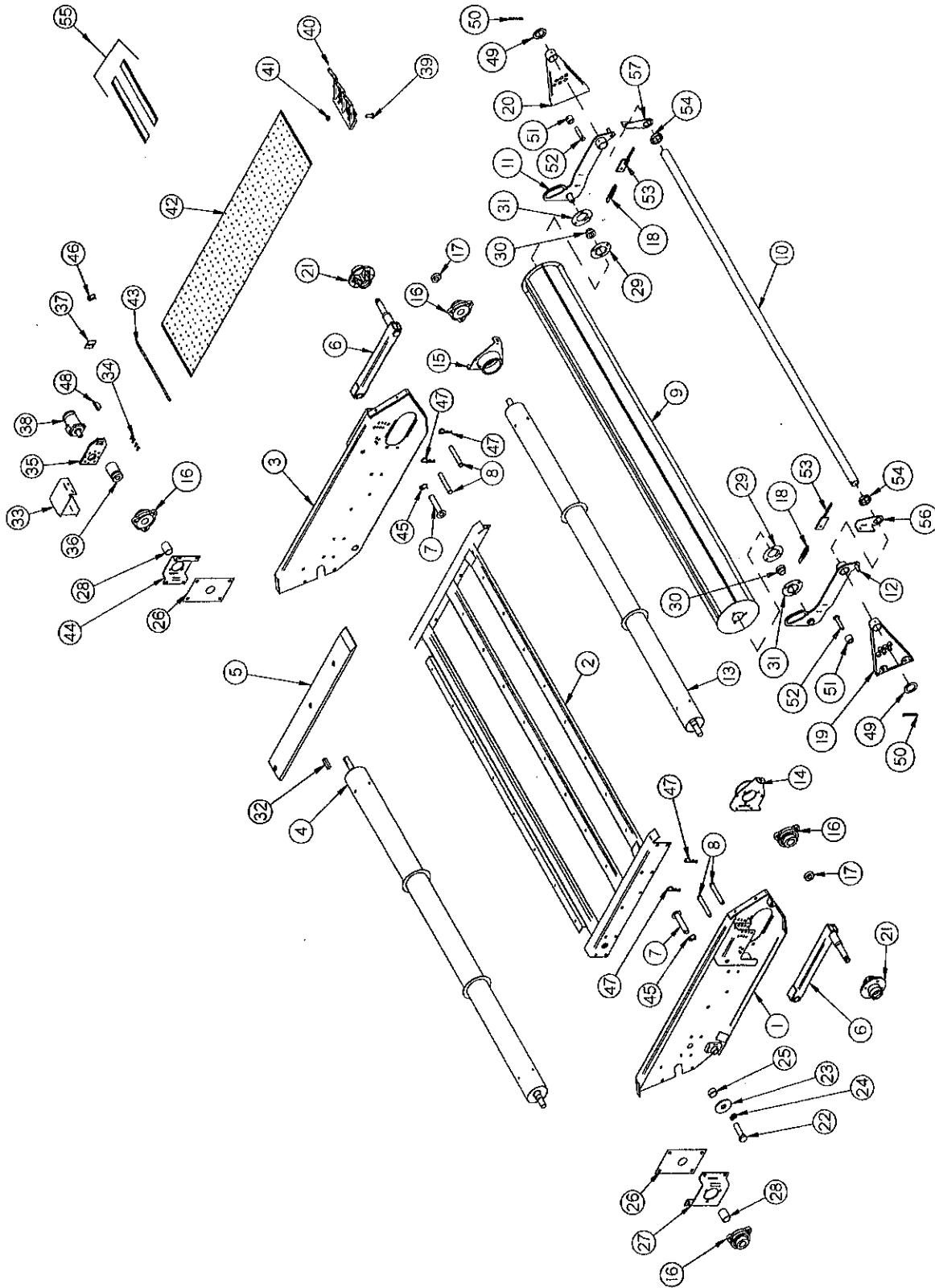


**FIGURE 2
9' MERGER PICK-UP HEAD**

ITEM	PART NO.	DESCRIPTION	ITEM	PART NO.	DESCRIPTION
1.	DWM6	Right Head Panel	25.	WM183	Pivot Bushing
2.	WM234	Flat Belt Frame	26.	WM180	Side Panel Slot Plate
3.	DWM5	Left Head Panel	27.	WM187	Bearing Bracket RH
4.	WM232	Head Drive Roller	28.	WM343	Spacer
5.	SWM15	Slides (8)	29.	F145	Flange
6.	DWM8	Gauge Arms	30.	WM29	Bearing
7.	DWM7	Pivot Pin	31.	F143	Flange (Greaseable)
8.	DWM127	Clevis Pin	32.	G23	Key 5/16" x 1-3/8"
9.	DWM332	Right Wind Guard	33.	DWM40	Head Shield
10.	- DWM2	Wind Guard Holder	34.	DWM137	Cap Screw-Coupler
11.	- WM299	Wind Guard Rods (13)	35.	DWM39	Hydraulic Motor Mount
12.	DWM333	Wind Guard	36.	DWM27	Coupler
13.	WM233	Front Idler Roller	37.	DWM45	Motor Spacer
14.	WM179	Right Front Roller Bracket	38.	DWM84	Hydraulic Motor
15.	WM192	Left Front Roller Bracket	*	WM225	Seal Kit
16.	SWM35	3-Bolt Bearing Assembly	39.	SWM26	1/4" x 3/4" Elevator Bolts (780)
17.	WM27	Lock Collar	40.	SWM1	Pickup Teeth (390)
18.	WM297	Poly Wind Guard	41.	SWM27	1/4 Keps Lock Nuts (780)
19.	DWM227	Wind Guard Washer	42.	SWM56	Pickup Belts - Only
20.	SWM55	Cotter Pin 1/4" x 2-1/2"	*	SWM57	Complete Belt W/ Teeth
21.	CAT177	Hub - Complete	43.	SWM41	Lacing Pin
*	CAT135A	Seal	44.	WM186	Bearing Bracket LH
*	CAT10	Bearing (2)	45.	R70	3/16" x 2" Cotter Pin
*	CAT9	Race (2)	46.	F56	Lynch Pin
*	CAT128	Stud	47.	ES7	Hair Pin
*	BFR144	Lug Nut	48.	5B10	Key 1/4" x 1" Woodruff
*	CAT12	Spindle Nut	49.	DWM347	Wind Guard Pivot Pin
*	BFR65	Cotter Pin	50.	DWM348	Wind Guard Adj. Pins
*	CAT13	Hub Cap	51.	DWM374	Wind Guard Bracket
*	SWM17	Wheel (2)	52.	DWM368	Wind Guard Poly
*	SWM18	Tire 5.70-8 (2)	53.	DWM385	Poly Brackets
22.	DWM177	Bolt 1" x 2-1/2" GR.5 Full Thread	54.	DWM355	Poly Support
23.	WM218	Washer	55.	SWM61	Repair Dutchman Kit
24.	DWM171	1" Lock Washer			

NOTE: *Means Not Shown

FIGURE 3



**FIGURE 3
12' MERGER PICK-UP HEAD**

ITEM	PART NO.	DESCRIPTION	ITEM	PART NO.	DESCRIPTION
1.	DWM6	Right Head Panel	25.	WM183	Pivot Bushing
2.	WM307	Flat Belt Frame	26.	WM180	Side Panel Slot Plate
3.	DWM5	Left Head Panel	27.	SHM13	Bearing Bracket RH
4.	SHM5	Head Drive Roller	28.	WM343	Spacer
5.	SWM15	Slides (8)	29.	F14	Flange
6.	DWM8	Gauge Arms	30.	F115	1-1/4" Bearing
7.	DWM7	Pivot Pin	31.	F114A	Flange (45° Zerk)
8.	DWM127	Clevis Pin	32.	G23	Key 5/16" x 1-3/8"
9.	WM352	12' Crop Roller	33.	DWM40	Head Shield
10.	WM346	Front Support	34.	DWM137	Cap Screw-Coupler
11.	WM348	Left Arm	35.	DWM39	Hydraulic Motor Mount
12.	WM349	Right Arm	36.	DWM27	Coupler
13.	SHM6	Front Idler Roller	37.	DWM45	Motor Spacer
14.	WM179	Right Front Roller Bracket	38.	DWM84	Hydraulic Motor
15.	WM192	Left Front Roller Bracket	*	WM225	Seal Kit
16.	SWM35	3-Bolt Bearing Assembly	39.	SWM26	1/4" x 3/4" Elevator Bolts (780)
17.	WM27	Lock Collar	40.	SWM1	Pickup Teeth (390)
18.	ST36	Spring	41.	SWM27	1/4 Keps Lock Nuts (780)
19.	WM350	Right Bracket	42.	SWM56	Pickup Belts - Only
20.	WM351	Left Bracket	*	SWM57	Complete Belt W/ Teeth
21.	CAT177	Hub - Complete	43.	SWM41	Lacing Pin
*	CAT135A	Seal	44.	SHM12	Bearing Bracket LH
*	CAT10	Bearing (2)	45.	R70	3/16" x 2" Cotter Pin
*	CAT9	Race (2)	46.	F56	Lynch Pin
*	CAT128	Stud	47.	ES7	Hair Pin
*	BFR144	Lug Nut	48.	5B10	Key 1/4" x 1" Woodruff
*	CAT12	Spindle Nut	49.	DWM227	Wind Guard Washer
*	BFR65	Cotter Pin	50.	SWM55	Cotter Pin 1/4" x 2-1/2"
*	CAT13	Hub Cap	51.	WM353	Poly Bumper
*	SWM17	Wheel (2)	52.	WM354	Adjustment Pin
*	SWM18	Tire 5.70-8 (2)	53.	12V78	Tightener Bracket
22.	DWM177	Bolt 1" x 2-1/2" GR.5 Full Thread	54.	WM347	Collar
23.	WM218	Washer	55.	SWM61	Repair Dutchman Kit
24.	DWM171	1" Lock Washer	56.	WM362	Spring Tightener Bracket Right
			57.	WM363	Spring Tightener Bracket Left

NOTE: *Means Not Shown

FIGURE 4

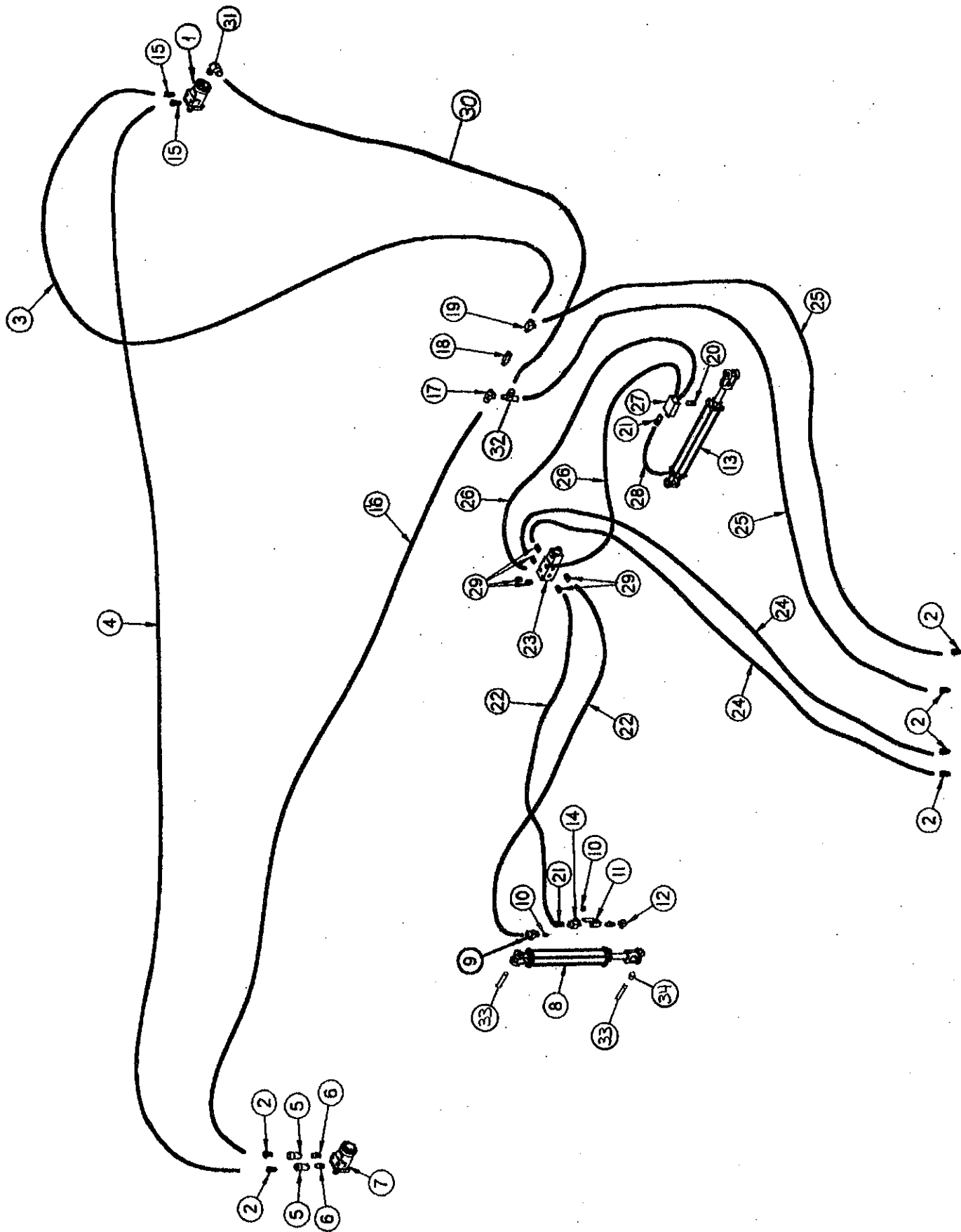
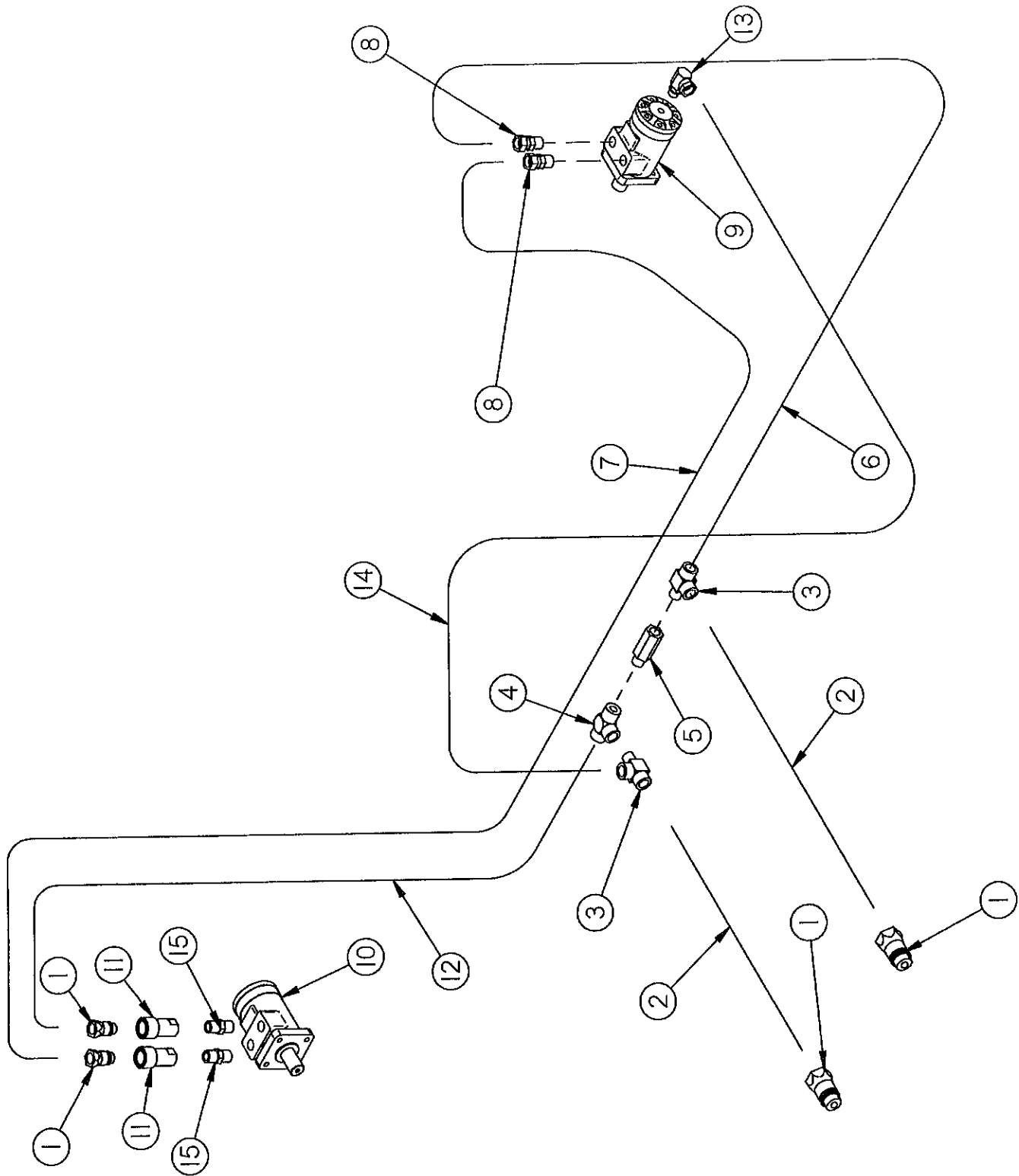


FIGURE 4
9' MERGER HYDRAULICS

ITEM	PART NO.	DESCRIPTION
1.	DWM84	Hydraulic Motor
*	WM225	Seal Kit
2.	DWM205	Male Coupler
3.	WM255	Hose 1/2" x 84"
4.	WM310	Hose 1/2" x 358"
5.	DWM206	Female Coupler
6.	WM141	1/2" Nipple Nut
7.	DF1	Hydraulic Motor
*	WM225	Seal Kit
8.	BFR69A	2" x 8" Cylinder
9.	WM146	1/2" Male/Female Tee
10.	WM147	Pipe Plug 3/8"
11.	16SV338	3/8" Ball Valve
12.	23N234	3/8" Street Elbow
13.	12V116A	2" x 16" Cylinder
14.	23N116	3/8" Service Tee
15.	LW174	1/2" Union Adapter
16.	WM311	Hose 1/2" x 266"
17.	DF8	1/2" Tee
18.	DF18	1/2" Check Valve
19.	16SV352	1/2" Service Tee
20.	BFR188	3/8" Nipple Nut
21.	T244	Adapter Union W/.042" Orifice
*	BFR122	Adapter Union
*	DWM250	Orifice .042
22.	WM257	Hose 1/4" x 140"
23.	FR81	Valve
*	WM325	Solenoid
24.	WM258	Hose 1/4" x 164"
25.	WM259	Hose 1/2" x 164"
26.	WM260	Hose 1/4" x 24"
27.	WM176	Pole Lock Valve
28.	BFR315	Hose 1/4" x 20"
29.	WM148	Female Adapters
30.	WM271	Hose 1/4" x 102"
31.	DWM119	O-Ring Adapter
32.	LW96	Tee
33.	BFR517	Cylinder Pin
34.	K132	Cylinder Spacer

NOTE: * Means Not Shown

FIGURE 5



**FIGURE 5
12' HEAD MERGER MOTOR CIRCUIT**

ITEM	PART NO.	DESCRIPTION
1.	DWM205	Male Coupler
2.	WM259	Hose 1/2" x 164"
3.	16SV352	1/2" Service Tee
4.	DF8	1/2" Tee
5.	DF18	1/2" Check Valve
6.	WM255	Hose 1/2" x 84"
7.	WM312	Hose 1/2" x 394"
8.	LW174	1/2" Union Adapter
9.	DWM84	Hydraulic Motor
*	WM225	Seal Kit
10.	DF1	Hydraulic Motor
11.	DWM206	Female Coupler
12.	WM313	Hose 1/2" x 302"
13.	DWM119	O-Ring Adapter
14.	WM271	Hose 1/4" x 102"
15.	WM141	1/2" Nipple Nut

NOTE: * Means Not Shown

FIGURE 6

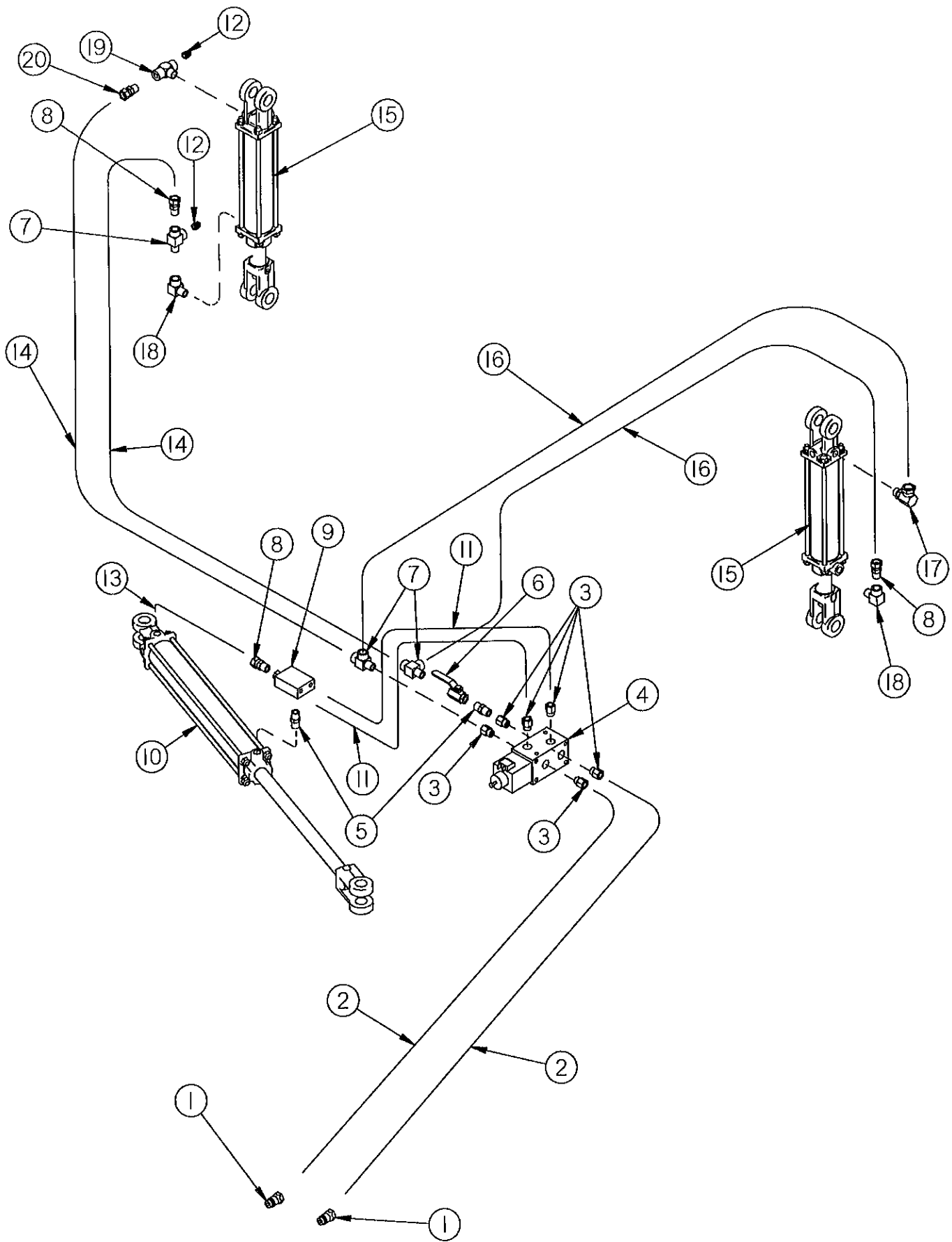
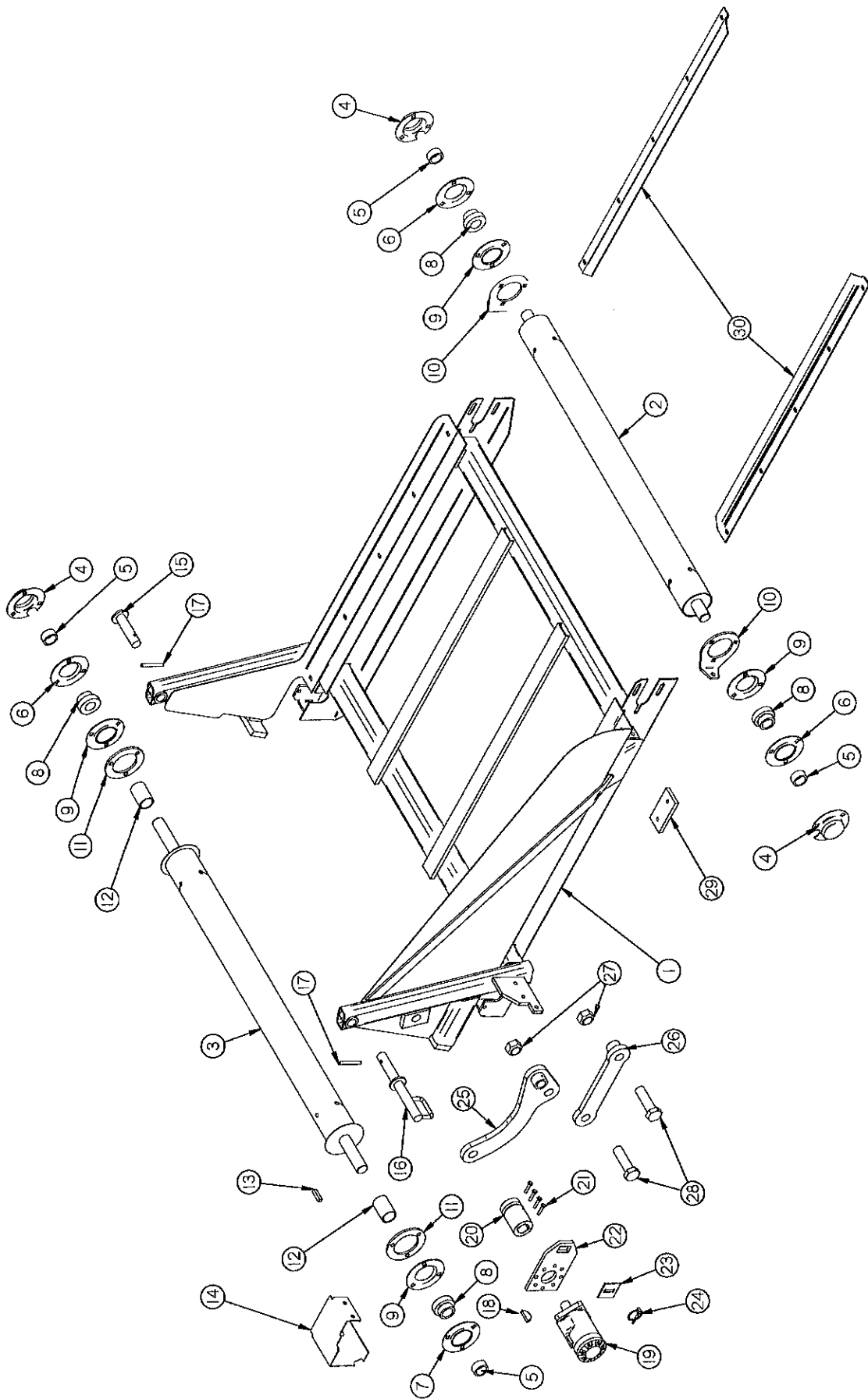


FIGURE 6
12' MERGER - HEAD LIFT HYDRAULICS

ITEM	PART NO.	DESCRIPTION
1.	DWM205	Male Coupler
2.	WM258	Hose 1/4" x 164"
3.	WM148	Female Adapters
4.	16SV247	Waterman Valve
*	WM325	Solenoid
5.	BFR188	3/8" Nipple Nut
6.	16SV338	3/8" Ball Valve
7.	23N116	3/8" Service Tee
8.	T244	Adapter Union W/ .042" Orifice
*	BFR122	Adapter Union (Threaded)
*	DWM250	Orifice .042
9.	WM176	Pole Lock Valve
10.	12V116A	2" x 16" Cylinder
11.	WM260	Hose 1/4" x 24"
12.	WM147	Pipe Plug 3/8"
13.	BFR315	Hose 1/4" x 20"
14.	WM315	1/4 x 175" - 3/8 MP & 3/8 MP
15.	BFR69A	2" x 8" Cylinder
16.	WM314	1/4 x 108" - 3/8 MP & 3/8 MP
17.	DWM110	3/8" Street Elbow W/90 Degree Swivel
18.	23N234	3/8" Street Elbow
19.	WM146	3/8" Male/Female Tee
20.	DWM233	3/8" Adapter Union (Un-Threaded)

NOTE: * Means Not Shown

FIGURE 7



**FIGURE 7
9' & 12' MERGER - EXTENSIONS**

ITEM	PART NO.			DESCRIPTION
	2' EXT.	4' EXT.	6' EXT.	
1.	WM316	WM320	WM321	Frame
2.	WM244	"	"	Tightener Roller
3.	WM243	"	"	Drive Roller
4.	F95	"	"	Bearing Shield
5.	F16	"	"	Lock Collar
6.	F114	"	"	Flange W/Straight Zerk
7.	F114A	"	"	Flange W/45 Degree Zerk
8.	F115	"	"	Bearing
9.	F14	"	"	Flange
10.	WM250	"	"	Flange Tightener
11.	23N174	"	"	Flange Spacer
12.	WM136	"	"	Ext. PVC Shield
13.	WM121	"	"	Sq. Key 5/16" x 1"
14.	WM319	"	"	Motor Shield
15.	WM245	"	"	Extension Pivot Pin
16.	WM248	"	"	Extension Pivot Pin Front
17.	3G22	"	"	Expansion Pin 5/16" x 1-3/4"
18.	5B10	"	"	Woodruff Key 1/4" x 1"
19.	DF1	"	"	Hydraulic Motor
*	WM225	"	"	Seal Kit
20.	DWM27	"	"	Coupler
21.	DWM137	"	"	Socket Head Cap Screw
22.	DWM39	"	"	Torque Arm
23.	DWM45	"	"	Motor Spacer
24.	F56	"	"	Lynch Pin
25.	WM317	"	"	Long Link
26.	WM318	"	"	Short Link
27.	BFR178	"	"	1" Lock Nut
28.	BFR545	"	"	Bolt 1" x 3-1/2" GR.5
29.	-----	WM251	"	Rubber Bumper
↑ 30.	WM272	WM273	WM274	Belt Guard
*	WM252	WM253	WM254	Belt
*	SWM37	"	"	Lacing Pin
*	SWM38	"	"	Lacing-Cross Conveyor

NOTE: * Means Not Shown

----- Means Not Used On This Model

" Means Same As Previous

FIGURE 8

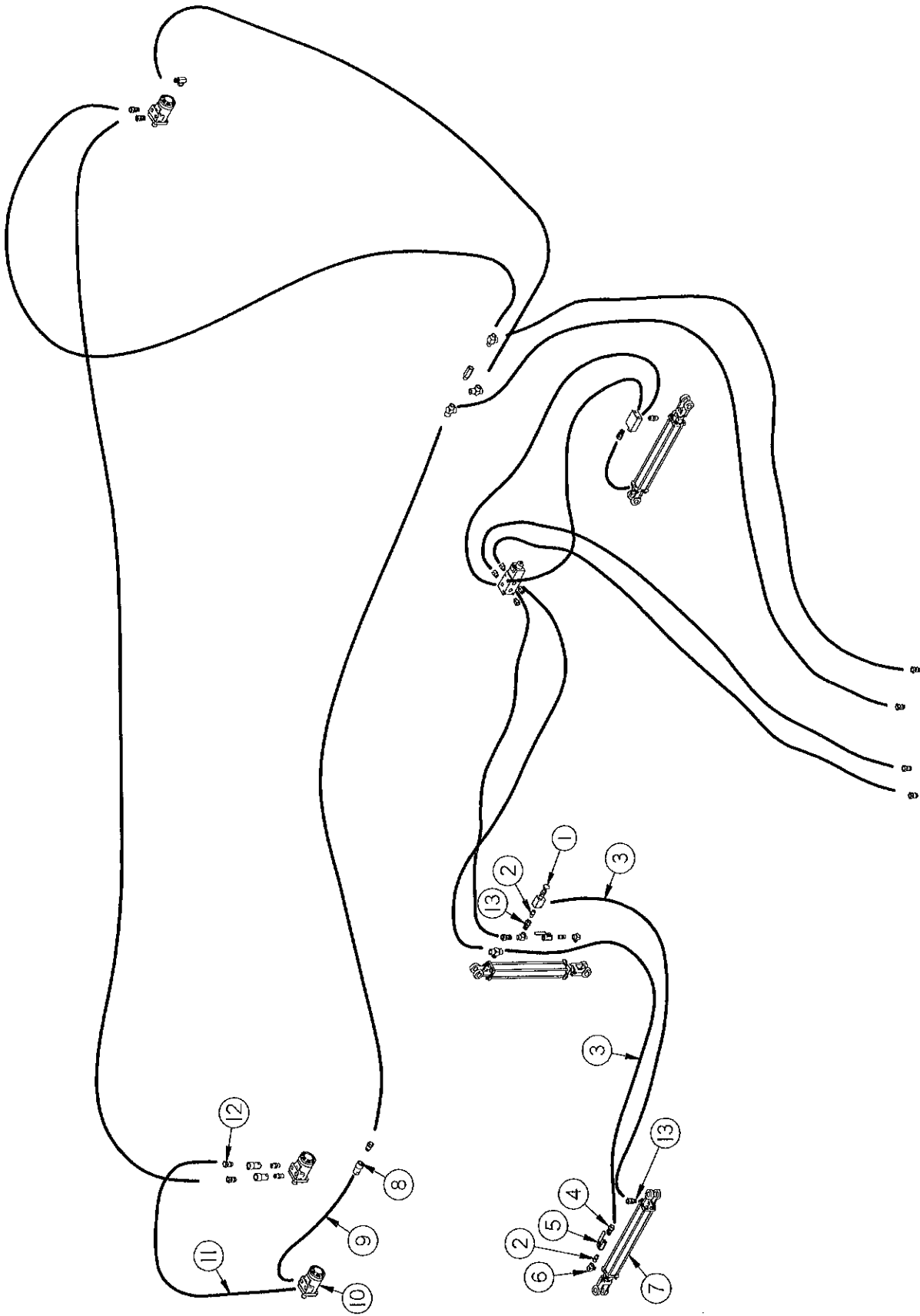


FIGURE 8
9' & 12' MERGER
2-4-6 FOOT EXTENSION HYDRAULICS

ITEM	PART NO.	DESCRIPTION
1.	16SV339	Sequence Valve
2.	BFR188	3/8" Nipple Nut
3.	WM257	Hose 1/4" x 140"
4.	T244	3/8" Union Adapter W/.042" Orifice
5.	16SV338	3/8" Ball Valve
6.	23N234	3/8" Street Tee
7.	23N111A	Extension Cylinder
8.	DWM206	Female Coupler
9.	WM263	Hose 1/2" x 24"
10.	DF1	Hydraulic Motor
*	WM225	Seal Kit
11.	WM264	Hose 1/2" x 40"
12.	DWM205	Male Coupler
13.	DWM233	3/8" Adapter Union

NOTE: Parts that are not numbered are used on standard hydraulics (See Figure 4)

* Means Not Shown

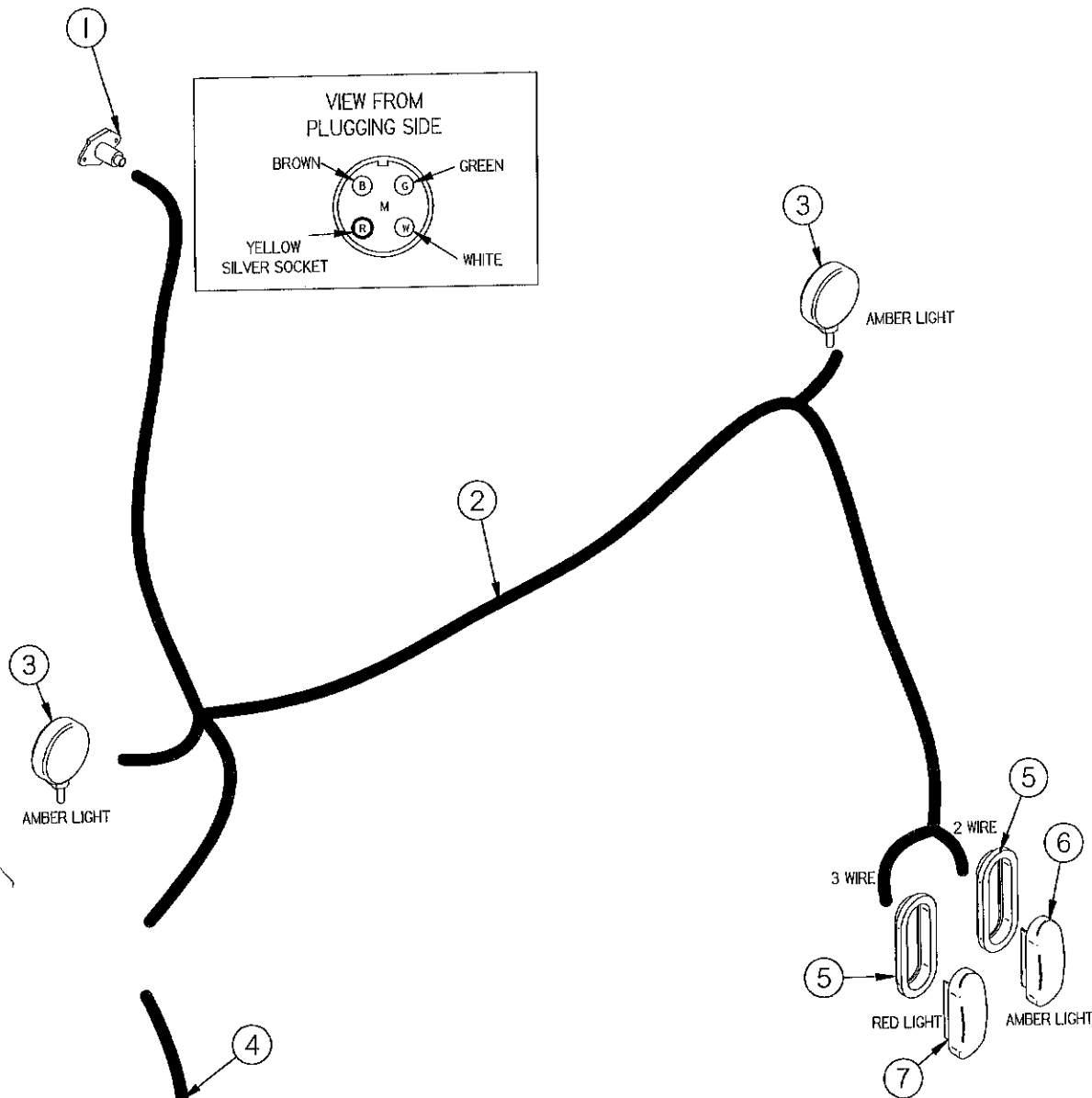


FIGURE 9
9' & 12' MERGER WIRING

ITEM	PART NO.		DESCRIPTION
	9' HEAD	12' HEAD	
1.	SWM46	"	Plug In
2.	WM364	WM365	Light Harness (Right)
3.	DWM129	"	Amber Light (Yellow Hazard)
4.	WM366	"	Light Harness (Left)
5.	S308	"	Rubber Light Mount
6.	DWM131	"	Amber Light
7.	S310	"	Red Light
*	WM330	WM331	Complete Light Harness

NOTE: * Means Not Shown
" Means Same As Previous

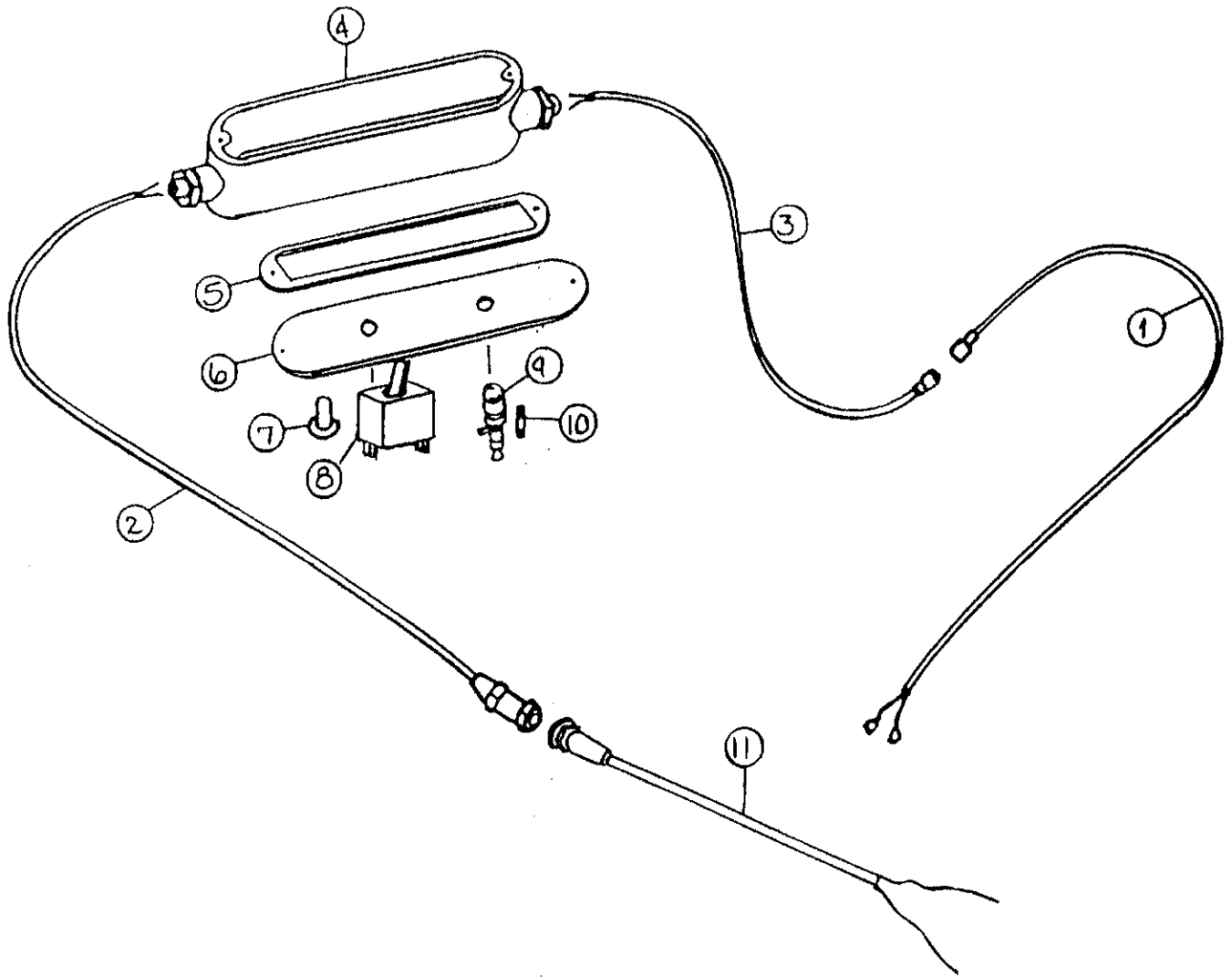


FIGURE 10
9' & 12' MERGER
ELECTRIC CONTROL BOX

ITEM	PART NO.	DESCRIPTION
1.	WM108	Merger Power Supply Cord W/Ends
2.	16SV271	Control Box Power Supply W/Plug in Slots
3.	16SV270	Tractor Power Supply W/Pins
4.	16SV316	Control Box
5.	16SV317	Control Box Gasket
6.	16SV318	Control Box Cover
7.	16SV235	Switch Boot
8.	WM109	Pole / Pickup Switch
9.	16SV231	Fuse Folder
10.	16SV232	Fuse
11.	16SV269	Tractor Control Cord
*	WM110	Control Box Complete

NOTE: * Means Not Shown

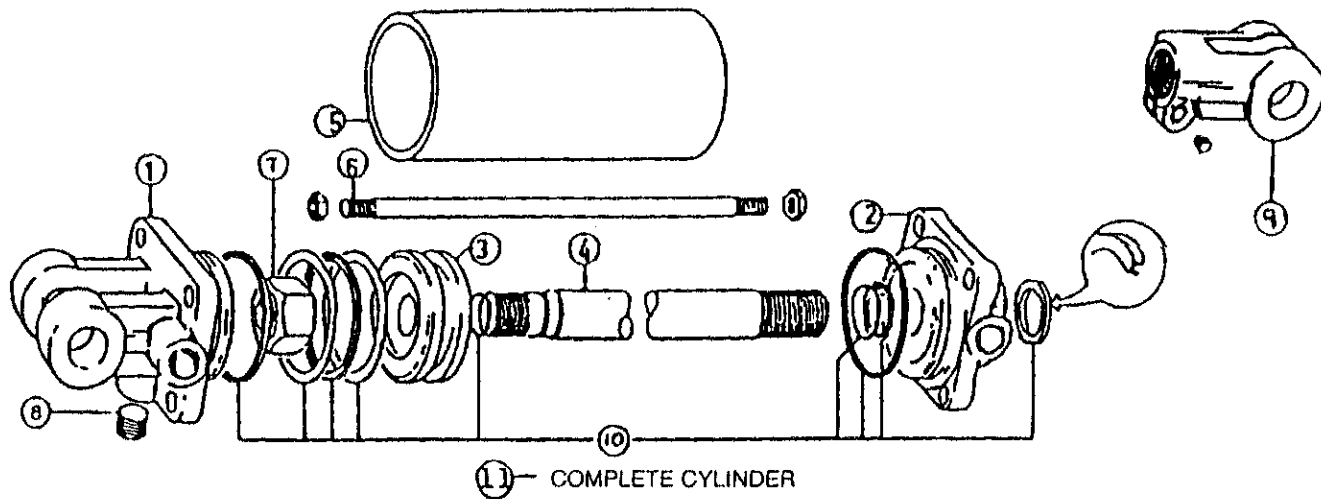


FIGURE 11
9' & 12' MERGER
PICKUP - HYDRAULIC CYLINDER 8"

ITEM	PART NO.	DESCRIPTION
1.	23N142A	Clevis
2.	23N143A	Rod Cap
3.	23N144	Piston
4.	T184A	Rod
5.	BFR68	Cylinder Tube
6.	T186	Tie Rod
7.	23N148	Piston Nut
8.	23N149	Plug
9.	23N150A	Rod Clevis
10.	23N151	Seal Kit
11.	BFR69A	Complete Cylinder

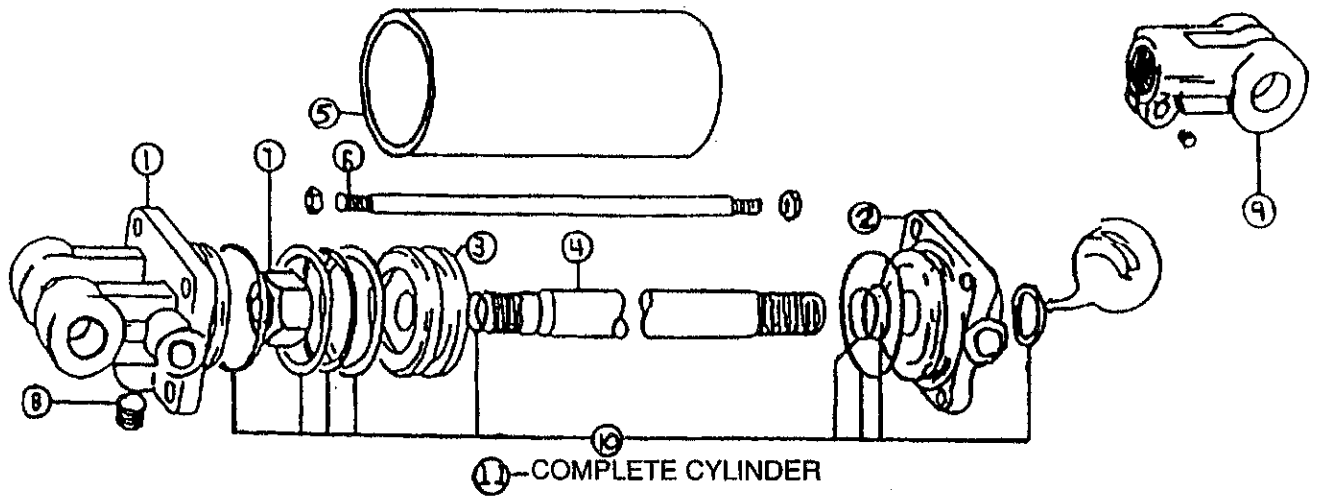


FIGURE 12
9' & 12' MERGER
POLE - HYDRAULIC CYLINDER 16"

ITEM	PART NO.	DESCRIPTION
1.	23N142A	Clevis
2.	23N143A	Rod Cap
3.	23N144	Piston
4.	23N145A	Rod
5.	23N146	Cylinder Tube
6.	23N147	Tie Rod
7.	23N148	Piston Nut
8.	23N149	Plug
9.	23N150A	Rod Clevis
10.	23N151	Seal Kit
11.	12V116A	Complete Cylinder

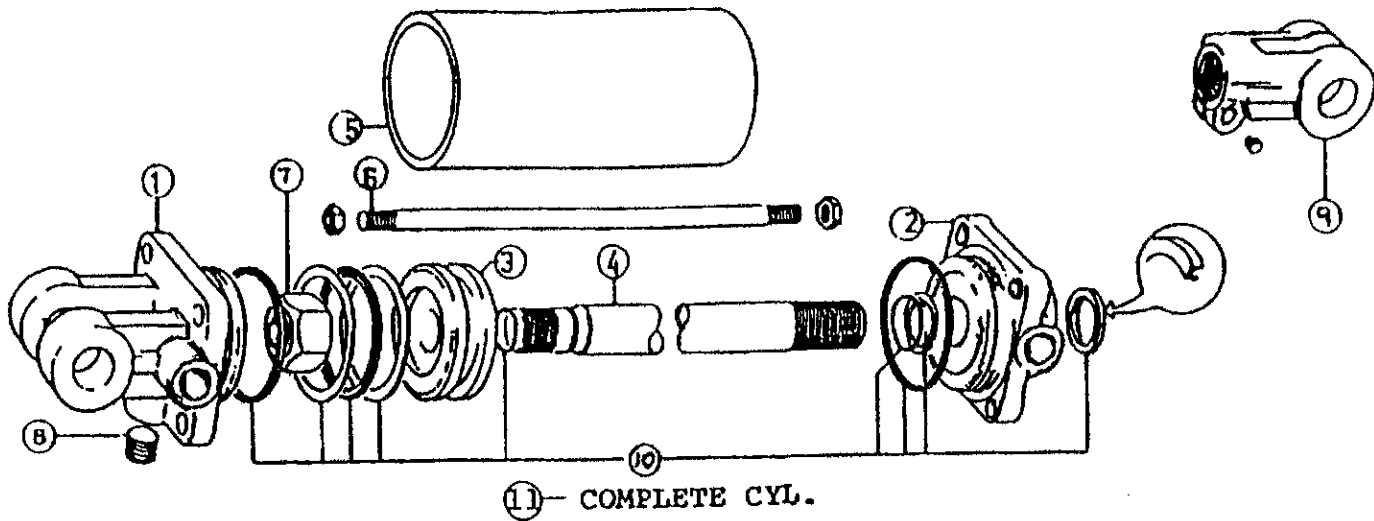


FIGURE 13
9' & 12' MERGER
OPTIONAL EXTENSION HYDRAULIC CYLINDER

ITEM	PART NO.	DESCRIPTION
1.	23N142A	Clevis
2.	23N143A	Rod Cap
3.	23N144	Piston
4.	23N145A	Rod
5.	23N146	Cylinder Tube
6.	23N147	Tie Rod
7.	23N148	Piston Nut
8.	23N149	Plug
9.	23N150A	Rod Clevis
10.	23N151	Seal Kit
11.	23N111A	Hydraulic Cylinder

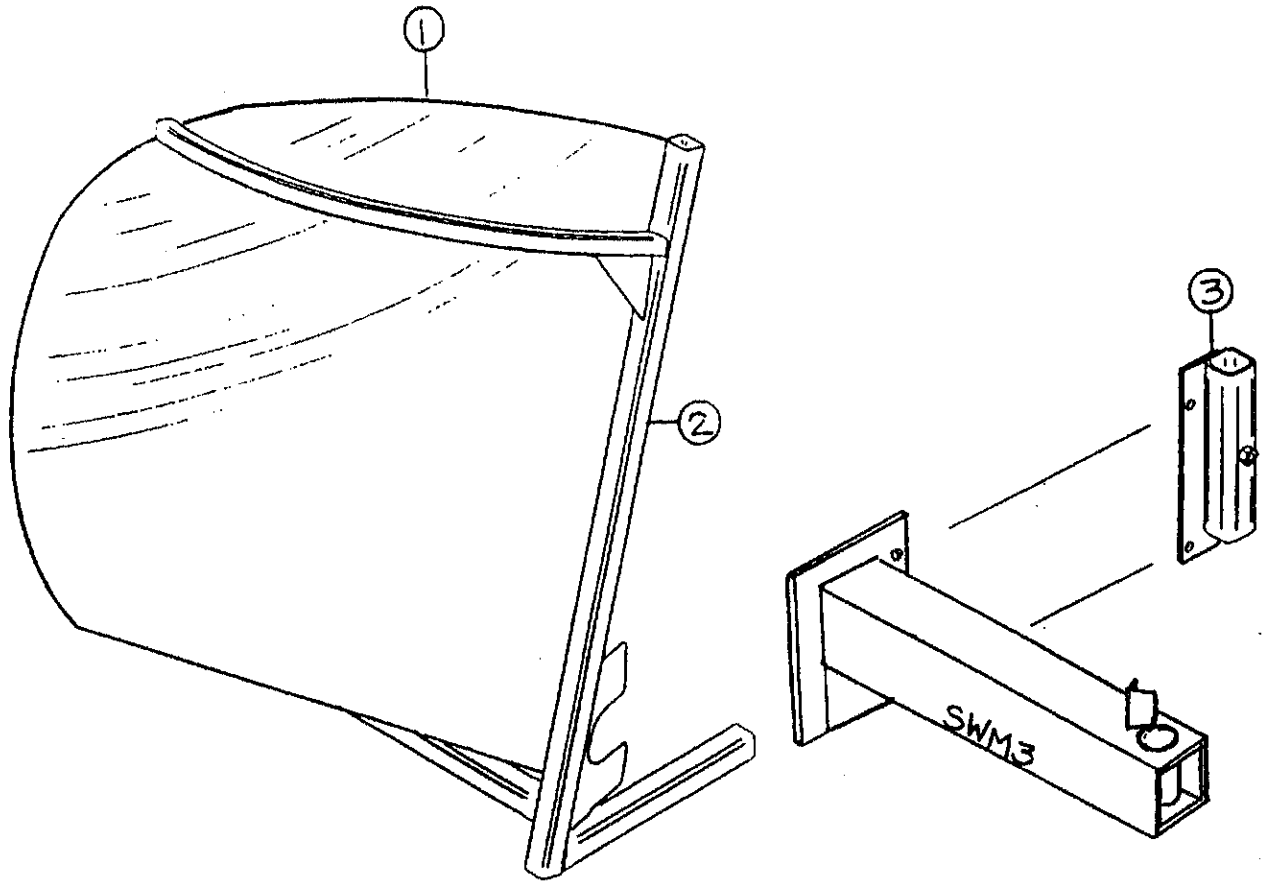


FIGURE 14
9' & 12' MERGER
OPTIONAL WINDROW INVERTER

ITEM	PART NO.	DESCRIPTION
1.	SWM50	Windrow Inverter Poly
2.	SWM51	Windrow Inverter Frame
3.	SWM52	Storage Mount

(NOTE: Storage Mount Bolts onto SWM3 Caster Mount - See Figure 1)

FIGURE 15
9'/12' MERGER
OPTIONAL CROSS CONVEYOR STOP KIT

ITEM	PART NO.	DESCRIPTION
1.	WM283	Pole Cord (18')
2.	WM284	Tractor Supply Cord (5'6")
3.	WM327	Solenoid Cord (24')
4.	16SV316	Control Box
5.	16SV232	Fuse
6.	16SV231	Fuse Holder
7.	WM290	Switch (SPDT)
8.	16SV318	Control Box Cover
9.	16SV235	Switch Boot
10.	16SV317	Control Box Gasket
11.	16SV271	Control Box Power Supply W/Plug In Slots
12.	42298	Decal
13.	LW140	1/4" - 20 Nut
14.	K84	1/4" Lock Washer
15.	WM139	1/2" Tee 5604-8-8
16.	WM289	7/8" O-Ring To 1/2" NPT Bushing 6405-10-8
17.	WM175	1/2" Swivel 90° Union Adapter
18.	DWM101	1/2" x 49" - 1/2" MPX & 1/2" MP Hose
19.	16SV349	1/4" x 2-1/2" GR. 5 Bolt
20.	WM333	Conveyor Stop Bracket
21.	WM293	Valve (Vickers From Price)

FIGURE 16

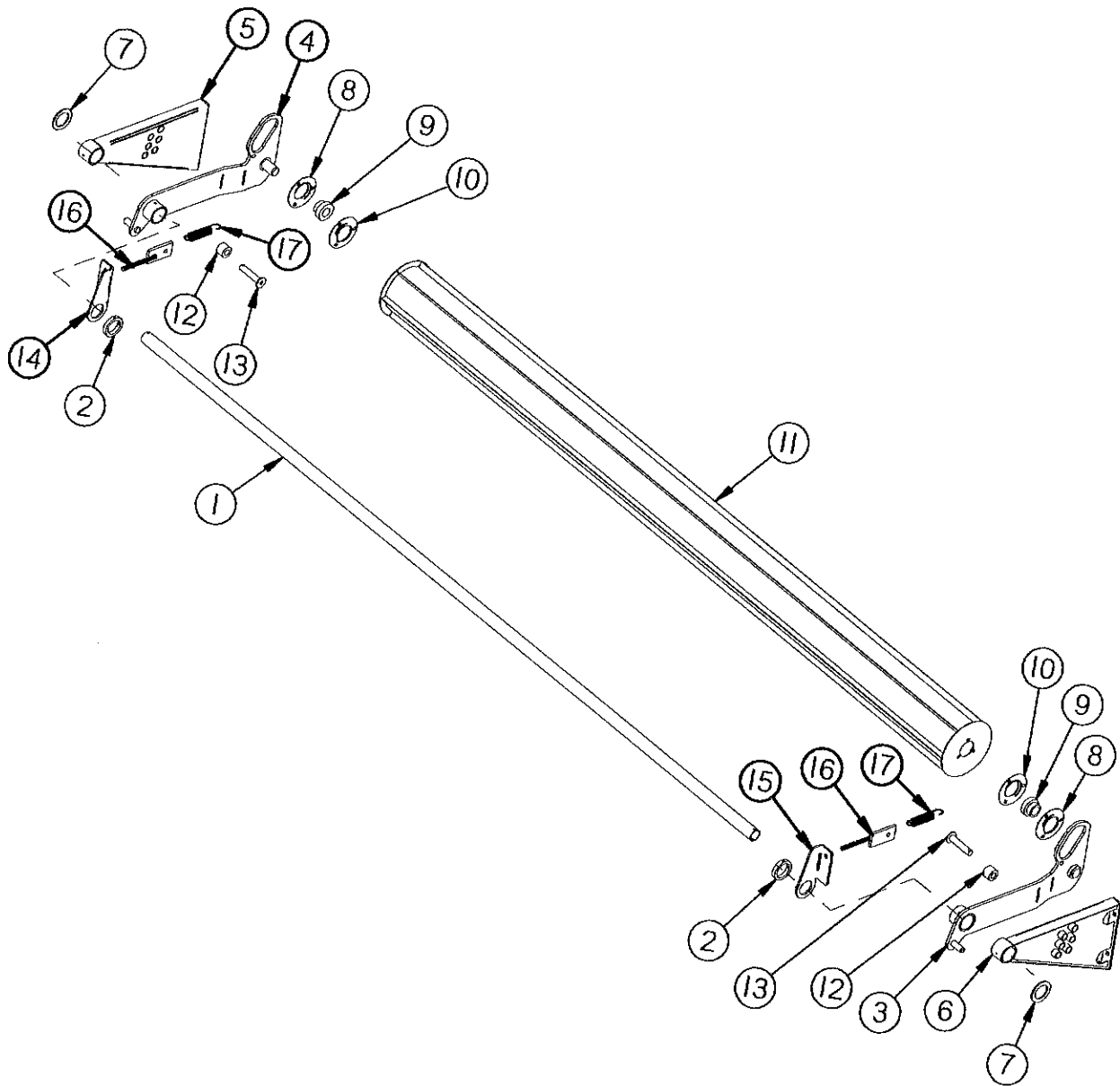


FIGURE 16
9' MERGER
OPTIONAL CROP ROLLER

ITEM	PART NO.	DESCRIPTION
1.	WM357	Front Support
2.	WM347	Collar
3.	WM348	Left Arm
4.	WM349	Right Arm
5.	WM350	Right Bracket
6.	WM351	Left Bracket
7.	DWM227	Wind Guard Washer
8.	F114A	Bearing Flange (45° Zerk)
9.	F115	1-1/4" Bearing
*	F16	1-1/4" Lock Collar
10.	F14	Bearing Flange
11.	WM356	Crop Roller
12.	WM353	Poly Bumper
13.	WM354	Adjustment Pin
14.	WM362	Spring Tightener Bracket Right
15.	WM363	Spring Tightener Bracket Left
16.	12V78	Tightener Bracket
17.	ST36	Spring

FIGURE 17

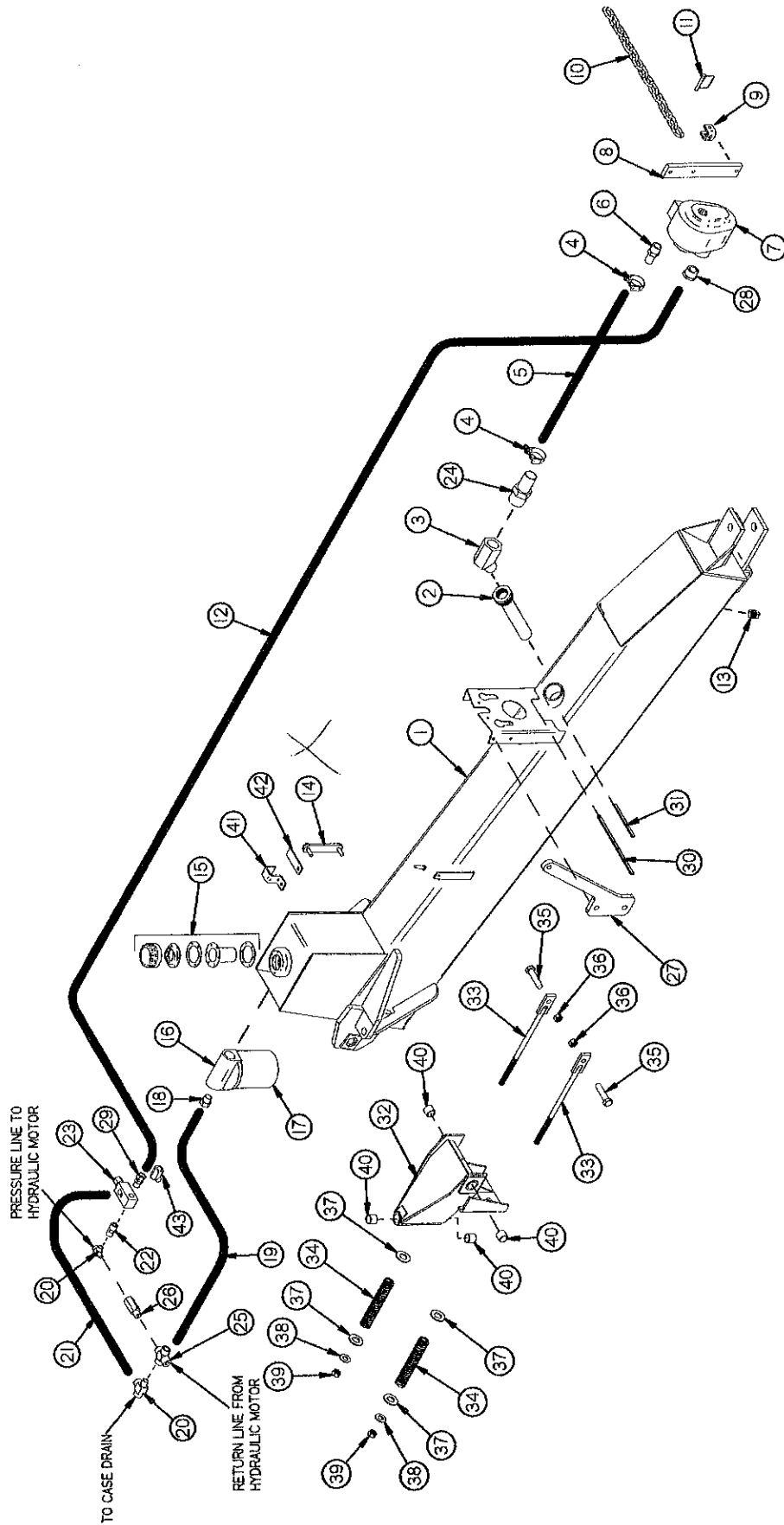


FIGURE 17
9'/12' MERGER
OPTIONAL WET KIT

ITEM	PART NO.	DESCRIPTION
1.	HSW15	Pole Tank
2.	HSW13	Suction Pipe
3.	DWM242	Street Elbow 45°
4.	DWM138	Hose Clamp
5.	HSW3	Suction Hose 1-1/4" x 46"
6.	HSW9	Hose Barb 1-5/16 - 12 to 1- 1/4 Tube
7.	HSW16	PTO Pump
8.	WM168	Torque Arm
9.	HSW5	Chain Yoke
10.	BFR111	Chain
11.	DWM191	Snapper Pin
12.	HSW6	Hydraulic Hose 3/4 x 122 #12SAE x 1/2 MP
13.	DWM159	Drain Plug
14.	DWM204	Oil Level Gauge
15.	DWM81	Filler Strainer Cap
16.	LW119	Filter Base
17.	LW120	Filter
18.	LW99	Bushing 3/4" to 1/2"
19.	16SV143	Hydraulic Hose 1/2 x 19" 1/2MP - 1/2MPX
20.	LW96	Service Tee 1/2"
21.	S395	Hydraulic Hose 1/2 x 10.5" 1/2MP - 1/2" 90°MPX
22.	WM141	Nipple 1/2"
23.	HSW7	Relief Valve
24.	DWM143	Hose Barb
25.	JB83	1/2" Cross
26.	DF18	1/2" Check Valve
27.	HSW8	Pump Holder
28.	HSW10	Port Bushing 1-5/16 - 12 to 1-1/16 - 12
29.	LW174	1/2" Union Adapter
30.	HSW11	Hole Edging
31.	HSW12	Slot Edging
32.	HSW14	Spring Assist Pivot
33.	RG10	Spring Adjust Rod
34.	T148	Spring
35.	RG15	5/8" x 1-3/4" Bolt
36.	T60	5/8" Toplock Nut
37.	RG9	Spring Retainer
38.	RG8	5/8" Flat Washer
39.	RG7	5/8" Nylon Locknut
40.	RG11	1" ID x 1-1/4" OD x 2" Bushing
41.	HE15	Hose Clamp
42.	HSW17	Hose Clamp Base
43.	LW187	Street Elbow 45°

- SERVICE NOTES -

613-774-6437